

Wainui Press

January 2023

Pro Talk

Mike Duncumb

Head Professional

page one

Hello golfers. I hope everyone had a fabulous festive season and are enjoying a few summer rounds of golf. The course is continuing to improve and is becoming a great test of golf with the couch fairways, bunkers and tees all improving. Over the next month, make sure you keep an eye out for our golf shop specials and footwear sale, we have had great success fitting our members into new golf clubs and custom shaft options, we encourage all our members to utilize our fitting studio and work on their golf swings in 2023. Both Ping & Titleist have released new clubs for 2023 and we have Demo clubs available.

Throughout 2022 we hosted many different types of events and tournaments and are looking to expand on these in the 2023 season, the first of which is Auckland's Toughest Test. This is being played on 19th of February and will put golfers off the 65 tee decks. This event is aimed at single figured golfers who enjoy a challenge. We have a good field but have space for 22 more players. for tee bookings email admingolf@wainui.online

In the lead up to Christmas, we have also had one of our key staff members decide to leave Wainui & take up a new challenge at Gulf Harbour Country Club. Sam Lee has been with us since opening at Wainui and has played an important role within our team. He has continued to further his education within the NZPGA and has been a big part of the programs and membership initiatives we have developed over the last 6 years at Wainui. We all wish him well with his new role and look forward to catching up with him when we visit

for a game. His last day will be 13th of January. Thank you Sam!

Twilight golf

The 2023 season of our Twilight golf competition kicks off on the 26th of January – We are hoping for much better weather in the second part of the season. As with the first 10-week season, there will be a mix of evening golf formats as well as weekly prize tables, and meal options in the View Eatery. Members entry \$10 Guests \$35 and the \$25 9-hole cart special makes this a great deal and fun evening.

Orchard 9

The par three short course is getting more popular, the golf course is attracting new players to Wainui and proving to be a great option for introducing new players to the game. Because of the increase usage, we ask that all members book in through the golf shop and collect your Orchard 9 scorecard before heading to the first tee.

The same rules apply around on course practice on the Orchard 9 as they do on the Wainui-18. Please limit the number of balls you hit at each green and repair pitch marks as you go.

MGI X5 Electric trundlers

This popular trundler has been out of stock. The electric MGI Zip X5 trundler has been a great performer at Wainui and has the all-important electronic park brake and downhill speed control, which we have found to be very important at our course. The trundler has the best fold up space saving system I have seen with a list of extras available, if you are having trouble, walking the course an

electric trundler is a great option.



Pricing starts at \$1599

Golf tips – Fairway Woods

These tips are aimed at helping players maintain good balance, more control, and a better strike on the golf ball – Very important when playing fairway woods off the deck.

- Address the ball with your feet shoulder width apart and the ball position a few centimetres inside your front foot to help the sole of the club sweep the turf correctly
- Keep balanced during the swing, do not try for a big weight shift from side to side. Keep your weight 50/50 on each foot until after impact.
- Tempo is key – work on making a balanced swing where the sole of the club sweeps the turf after impact of the ball.
- Do not be tempted to lift the ball into the air with your hands, sweep the ball off the turf as you rotate into a full finish.
- For more control grip down on the club a few centimetres. This will also help make a more consistent strike.

Location:

35 Windmill Drive
Wainui 0992 New Zealand

Mailing:

35 Windmill Drive
Wainui 0992 New Zealand

www.wainui.online

Wainui Press

January 2023

Turf Talk

Alain Le Sueur

Golf Course Superintendent

page two

As I write this newsletter, the sun is shining! With a record November-December rainfall of around 460mm, the course was looking wet. The good thing about this time of year is that it doesn't take long to dry out once the sun comes out.

With all this rain, the course is looking green, and the lake is full. Once we get on top of all the areas of rough we haven't been able to mow, the course will start to look and play like we all want it to.

The putting green wall has been built and I look forward to getting stuck into the construction of our new putting green.



If you can imagine, the new green will push out towards the fitting

studio and out to the wall, a well as extending further down towards the first green. This will almost double the size of the existing green.

The driving range is coming along surprisingly well while we wait for our contracting friends to come back and finish the job. There are large amounts of couch that has taken hold from the previous year, and this will help substantially with the grow in once a date has been confirmed.



The driving range tee that had its surface removed is coming back nicely, and with the addition of some sand, it will cover over in no time.

It has been a great year, with many challenges and firsts for myself. I look forward to a great 2023 and the

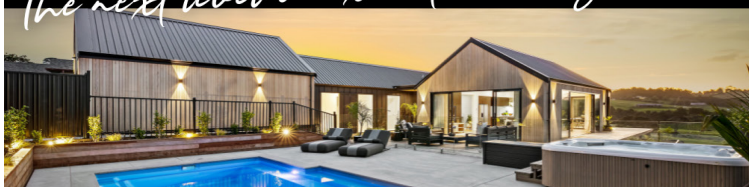
exciting times ahead for our club.


I would also like to thank all the greens crew, old and new for your continued support, enthusiasm and your passion for this club and the game of golf. In addition, a big thank you to the Membership, the Wainui Board and Team Wainui for their encouragement as we all strive to make the golf course and supporting amenities and services better everyday.

Merry Christmas and Happy New Year!



The next level in executive living!



 Gareth Hookham



NEW LISTING! 65 GRAYSON RD, WAINUI

PH: 021 345 474 | gareth.hookham@harcourts.co.nz

- 4 Bed, 2.5 Bath | Designer open plan kitchen & living area
- Approx 280sqm floor area | Swimming pool & large entertaining area
- Overlooking the 3rd hole at Wainui Golf Course | Over 1500sqm section

Harcourts Cooper & Co
Cooper & Co Real Estate Licensed Under REAA2008

Wainui Press

January 2023

Bits & Bites

Matt Burton

Bar Manager

page three

Balthasar Reiferscheid

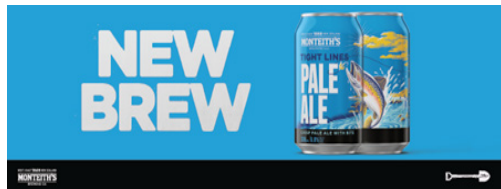
Head Chef

I hope you have all enjoyed the Christmas festivities and have been able to spend some quality time with family and friends. We ended the run into Christmas busy with more functions and now that there seems to be some hot fine weather (finally!) the club house has already been busy with golfers and people enjoying the holiday season. We are all looking forward to recharging our batteries and getting ready for a busy year ahead.

Some final snaps from end of year functions:



Introducing the latest addition to our tap beer line up: Monteith's Tight Lines Pale Ale Strike! Reel in this crisp, clear Pale Ale.



Brewed with Galaxy and Mosaic hops hooked into the best New Zealand ale malts and rippling with fruit-forward, balanced bite. Time to wind down river and spool the slack, ready for tight lines tomorrow.

Just for laughs...



Up Coming Events:

Friday 13th January – Burger Night
Friday 20th January - Steak Night
Thursday 26th January – Twilight
Friday 27th January – Rib Night

We are still looking for new team members to join us. So if you know anyone who could be interested get them to get in touch – fabdb@wainui.online

STAFF WANTED

If you are looking to join a fun, positive and high energy team then we have a job for you! Experience preferred but not necessary as we are willing to invest the time to train the right people with the right attitude.

We are currently on the hunt to fill the following positions:

- Duty Manager
- Sous Chef/Senior CDP

The skills and qualities we are interested in are:

- Positive, enthusiastic attitude
- Proven reliability
- Customer focused
- Great communicators
- Willingness to work nights and weekends

Have your morning coffee with us...

**NOW
OPEN
FROM
9am**

Saturday and Sunday

Remember to grab a drink and bite from The View and don't forget to slip, slop, slap and wrap!

Happy New Year!

Hello to all,

As the year 2022 comes to its end, so also will my time as the Head Chef of the Wainui Golf Course and Function Centre.

After being diagnosed with pancreatic cancer last August, I had a very complicated and difficult surgery in September followed with Chemotherapy that is still ongoing.

Due to these events and my need to focus on my health I've decided, with a very sad heart, to resign my position as Head Chef from the club.

I thank everyone from the club for their great support through this hard time for my family and myself.

Thank you for loving my food and all the feedback I received over the years. I loved working in this great environment and wish it would be many more years. It was the best time I ever had working in a kitchen and appreciated each day working in service for the club.

But now it's the time when I have to look behind myself and enjoy the time I will have left. I would like to thank Terry and the Board members for all their support through this most difficult time.

I hope I will get the chance to call around in the future and catch up with you all. I wish everyone a happy new year!

Forever yours,

Balti - Head Chef
Wainui Golf Course & Function Centre

Wainui Press

January 2023

page four

GM's Corner

Terry Yacyshen

General Manager

As we are on the eve of 2023 I am happy to share my excitement of what we've all been able to accomplish during the past year and what lies ahead for the coming year.

In fact since February 2020 which marked the first reported case of Covid the merry-go-round that insued has been nothing short of monumental on many fronts. No need to relive every step along the way but, I would be remiss if I didn't mention in December 2021 New Zealand moved the Traffic Light Alert system. It wasn't soon afterward that NZ identified its first case of Omicron and traveling in and out of Auckland was tenuous at best with numerous restrictions on covid free travelers, close contacts and isolation requirements being the talk of the day. Just when we were beginning to believe the worst had come and gone on January 23rd the government announced that Auckland was moving to "Red" in the traffic light system and our regular activities were jolted once again. Thankfully by mid-April fears of massive contagion and sinister outcomes were being replaced by lessening restrictions and improving social acceptance. By the end of September life was returning to normal and now, three months later the events of the past two years seems like a distant bad dream. Hopefully, our small island nation will never again

be visited with such disruption and I for one will rejoice the coming of the New Year, never having to relive the past again by wishing all a very happy, healthy and prosperous 2023!

Rain, rain go away only to return should we desire, for a day! I'm sure this mirrors the sentiment of many of our Members. I happened to be at Remuera on an industry visit middle of December and in discussion with their GM he shared they've kept weather records for the past 40 years and both the months of July and November 2022 reported the greatest levels of precipitation during that time period. I suppose the silver lining is that we'll not be concerned about growing in the driving range couch surface, rather, we are more concerned with conditions drying out to the point where we can ensure the access of necessary equipment won't damage the ground conditions and allow this piece of work to restart. All will notice the first stage of the putting green expansion is now complete. This open face rock retaining wall will provide a solid support for the fill required to expand the surface to double its size allowing for more hole placements and mitigate turf damage through excessive wear.


As announced at our Member forum in August '21 and motioned at our most recent AGM we are moving our subs

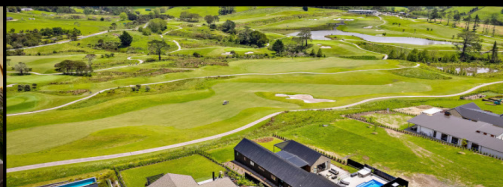
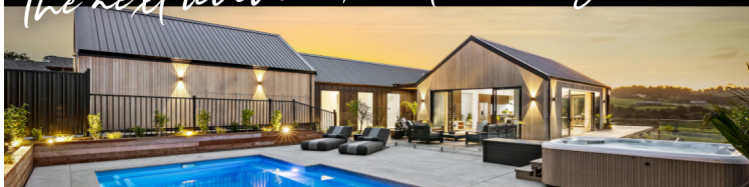
to a level where we believe our products and service offerings reflect good value with a full play sub moving to \$2300.00 for current Members with all other categories moving higher at a similar percentage and \$2675.00 for new applicants only.

We believe we are very well positioned in the marketplace when one is assessing the dollar spend for a Full Play offering for those where an "unlimited play" version is appealing. With the recent and soon to be enacted course improvements and playability enhancements our product stacks up well when those who are considering joining a club run the numbers as witnessed by the 200+ Members joining since re-opening.

At risk of sounding like a broken record I will again tip my hat and thank all those associated with Barry Davison's army of volunteers. Barry keeps calling and they keeping coming! No doubt all those involved have made a tremendous difference when it comes to maintaining areas of the grounds that before were left unattended. The native plantings within the grounds of Wainui are vast and the manhours involved in general upkeep, let alone improvements are significant. On behalf of all others I thank you for your contributions over the past while and hope we don't have to call upon you too often. To all Members and their families we hope all enjoy health, happiness and prosperity in 2023 and beyond.

The next level in executive living!

 **Gareth Hookham**



NEW LISTING! 65 GRAYSON RD, WAINUI

PH: 021 345 474 | gareth.hookham@harcourts.co.nz

- 4 Bed, 2.5 Bath | Designer open plan kitchen & living area
- Approx 280sqm floor area | Swimming pool & large entertaining area
- Overlooking the 3rd hole at Wainui Golf Course | Over 1500sqm section

Harcourts Cooper & Co
Cooper & Co Real Estate Licensed Under REAA2008