

# Wainui Press

December 2022

## Pro Talk

Mike Duncumb

Head Professional

page one

Hello Golfers – What a slow start to the summer season, the rain has meant soft golfing conditions and a few postponed golf events.

Fingers crossed for the weather to start improving, the longer days are allowing more members and guests to get out onto the course and enjoy the lush spring conditions. As the season, changes please keep an eye out for the local rules, when conditions allow we will be moving away from clean & place in the general area.

With Christmas coming up fast, we have some exciting events in the calendar for December and January. First up is Hamper Day, followed by Closing Day plus the December Mid-month Open. The Toughest Test tournament played from the 65 tees has been rescheduled for the 19th of February. Bookings are available for all these events in the golf shop or by emailing [admingolf@wainui.online](mailto:admingolf@wainui.online).

It is great to see more players coming out and enjoying Wainui, with usage of the Orchard 9 increasing. The course is attracting new players to Wainui and proving to be a great option for work functions and Christmas parties. We are just about to launch the Orchard 9

She Loves Golf tournament on the 16th of December. This is a beginners ladies teams Ambrose tournament followed by drinks and food specials in the View Eatery. If you are interested in taking part, please email: [hp@wainui.online](mailto:hp@wainui.online).

### Gift Cards – Christmas presents



Remember gift vouchers, golf cart concession cards and Wainui gift cards are still available

offering discounted pricing and perfect Christmas presents. Along with these cards, there are new stock items arriving daily from golf balls to Trundlers and socks to putters there is something for every golfer. If you have a special request or are looking for a specific item we are only too happy to quote it for you.

### Pro Tip

Picking a Target - Aim small, miss small. Club golfers love to think lots about their golf swing and very little about their target. This causes your brain to focus far more on making a nice golf swing and far less about where the swing will send the ball.

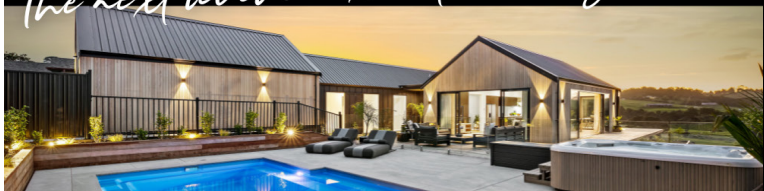
Pick a small target - When hitting off the tee pick the top of a tree or small target in the distance to aim for. When hitting into the green pick a small target near the centre of the green and focus on making a great swing towards that point. This simple change in your thinking will lead to more accurate golf shots and far less stress when playing golf.

### New Shoes 4 Summer? Why Not!



We have just received the new FJ Traditions in three different colour ways, these are light weight, waterproof shoe and offer a comfortable walking option. RRP \$209 Wainui members price \$188 We have had nothing but good feedback about this Footjoy model.

*The next level in executive living!*



**NEW LISTING! 65 GRAYSON RD, WAINUI**

PH: 021 345 474 | [gareth.hookham@harcourts.co.nz](mailto:gareth.hookham@harcourts.co.nz)

- 4 Bed, 2.5 Bath | Designer open plan kitchen & living area
- Approx 280sqm floor area | Swimming pool & large entertaining area
- Overlooking the 3rd hole at Wainui Golf Course | Over 1500sqm section



Gareth Hookham



**Harcourts** Cooper & Co  
Cooper & Co Real Estate Licensed Under REAA2008

Location:  
35 Windmill Drive  
Wainui 0992 New Zealand

Mailing:  
35 Windmill Drive  
Wainui 0992 New Zealand

[www.wainui.online](http://www.wainui.online)

# Wainui Press

December 2022

## Turf Talk

Alain Le Sueur

Golf Course Superintendent

page two

Well, the common theme of these last 6 months has been the weather. When will it stop raining! So far, since the start of 2022, we have had 834mm of rain and counting. Hopefully it eases off soon so we can all benefit from the sunny days.

With the bad weather halting our spraying programs, the grounds crew have been busy finishing off a lot of the couch turfing around the fairways. You will have noticed the turf disappearing from the driving range tee. This will be transferred up to our nursery to help with the grow in there. The stolon's which are left in the ground after turf cutting will bounce back and cover over in no time.

It's been a while since the tees have had any aerification, so you will see some nice holes being punched into them to help get some oxygen and water down past the root zone.



As the fairway couch develops more with age, we will start to get into a regular verti-cutting programme to help with horizontal growth that couch grass is known for.

This will help to fine up the leaf blade and encourage a nice, thick, fine turf cover, ideal for playing off. This is the best time of year to renovate warm season grass, as you still have good rainfall and warmer temperatures which will help with the recovery without putting it through extra stress.



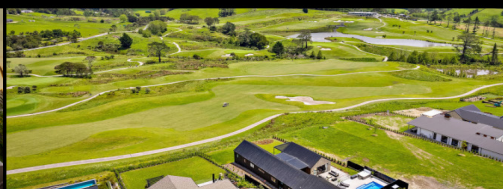
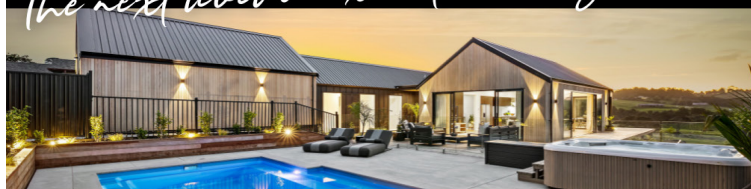
The rock wall is slowly coming along, but as with everything, the weather is making it difficult to get big machinery around the place. Hopefully it will be completed shortly, so we can get started on the construction of our new putting green complex. To ensure all are aware this is the first step in the expansion of our putting green adjacent to the first tee. This important surface gets significant use year round and struggles to remain in good condition due to over use and compaction and was prone to various turf disease. We cannot just continue to treat with chemical and expect the green to withstand the amount of use. Therefore, when the rock retaining wall is finished we will schedule the complete redesign and expansion of this important asset. The turf crew are anxious to get this started and know it will pay dividends in providing a better surface for all members to enjoy.

As for the driving range, the couch that is there is doing really well, we're just waiting on the weather and contractors to turn up so we can restart the turf conversion process.

Before we know it, it will be Christmas and the sun will be shining.

*The next level in executive living!*

 Gareth Hookham



**NEW LISTING! 65 GRAYSON RD, WAINUI**

PH: 021 345 474 | [gareth.hookham@harcourts.co.nz](mailto:gareth.hookham@harcourts.co.nz)

- 4 Bed, 2.5 Bath | Designer open plan kitchen & living area
- Approx 280sqm floor area | Swimming pool & large entertaining area
- Overlooking the 3rd hole at Wainui Golf Course | Over 1500sqm section

**Harcourts Cooper & Co**  
Cooper & Co Real Estate Licensed Under REAA2008



# Wainui Press

December 2022

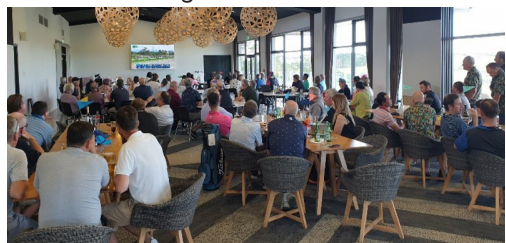
## Bits & Bites

**Matt Burton**

Bar Manager

Well, I started off last months article with how the weather was on the improve...how wrong was I! Hopefully from now things start to settle so we can all enjoy some great days golfing, eating and socialising. So another reminder to make sure you're properly prepared before you tee off and grab a drink and bite from The View and don't forget to slip, slop, slap and wrap!

The function season is in full swing, and we've already seen some great events, as well as member functions, enjoying all we have to offer here at Wainui – all receiving fantastic feedback and reviews! Some photos from just a couple of the many functions during November.



**New Zealand Good & Great - \$9.50/bttl**



Say hello to a new Kiwi drinks brand, Good & Great, made to celebrate all the things that make

our country special. Crafted with natural ingredients including pure New Zealand vodka, crisp sparkling water, natural flavours, and sweetened with locally picked

apples, this new modern brand makes beverages that are as refreshing as an onshore ocean breeze.

Good & Great is available in three variants with classic Kiwi flavours people know and love, in fresh combinations that are fruity and delicious. Raspberry & Lime, Passionfruit & Pineapple, Peach & Pear and Tangy passionfruit, with a sweet little bite that tastes like a summer kiss behind the Whangamata surf club.

Just for laughs...Thought this was quite relevant due to the weather over the past month!

## Devices used to find water



## Up Coming Events

Thurs 1st Dec – Twilight  
Thurs 8th Dec – Twilight  
Friday 9th Dec – Burger Night  
Sat 10th Dec – Club Closing Day  
Wed 14th Dec - Mid-month Open  
Sun 18th Dec – Christmas Buffet Luncheon  
Friday 23rd Dec - Steak Night  
Friday 30th Dec – Rib Night

Please give us a call to reserve a spot for any other these events 09 444 3437 ext 4.

page three

**Balthasar Reiferscheid**

Head Chef

## Beef Noodle Soup Pho Bo



### Ingredients - 6 portions

450 grams	Beef Brisket
3 litres	Beef Broth
3 tbsp	Fish Sauce
340 grams	Rice Noodles 10mm
340 grams	Beef Eye Filet (thin sliced)
250 grams	Spring Onion
100 grams	Mung Bean
1 small	Lime (cut wedges)
2 med	Jalapeno (thinly sliced)
3 tbpsps	Chilli Sauce (Sriracha)
3 tbpsps	Hoisin Sauce

### Directions

Place the brisket in a large pot and add the stock. Bring to the boil over a high heat, then lower the heat to a vigorous simmer. Simmer the brisket until cooked through. When the brisket is cooked, remove it from the pot, reserving the cooking liquid, and submerge it in ice water to stop the cooking process. When cooled thinly slice against the grain, set aside

Return the stock to the boil over a high heat. Taste for seasoning and add fish sauce if needed. Cut the raw eye fillet in very thin slices. Ready the garnish, bean sprouts, lime wedges, and jalapeno on a platter. Mix the sriracha and hoisin sauce together. Divide the cooked rice noodles evenly into warmed soup bowls, top with the sliced brisket and raw eye fillet. Pour the boiling broth gently over the top, garnish with finely chopped spring onions and serve with the sides.

# Wainui Press

December 2022

page four

## GM's Corner

**Terry Yacyshen**

General Manager

Let me be one of the first to wish all the very best for the upcoming holiday season and a happy and healthy new year!

For those of you who were not in attendance at the November Annual General Meeting amongst other motions a new Junior Legacy Membership category was introduced. This category is specifically designed to encourage growth from within our current Membership. Those who are 18 years and younger and a blood relative to any Members currently in a golfing category can make application to join this category.



There is a significant discount in relation to our current Junior category offered at \$350.00. In addition to the typical access privileges half of the sub paid will be earmarked for tuition with a Wainui professional throughout the calendar year. A great way to introduce young players to the club

and build the culture associated with a multi-generational Membership base.

For those of who are traveling internationally this summer please remember our association with Pacific Links that provides access for a preferred rate to over 450 courses worldwide. Just enquire with the golf shop to confirm the process required to book a time at a reciprocal club or paste this link into a browser and discover the opportunities at your leisure; <http://www.pacificlinks.com/en/>

As we near the Christmas season we hope you're able to visit the club often and enjoy the course and clubhouse with family and friends. Be sure to call ahead if you are looking to make plans to ensure the facility is open and available no matter your desire. Of

particular note the facility will be closing early Christmas Eve, 24th December at 4:00 p.m. and will remain closed until Boxing Day, 26th December at noon. Similarly, the facility will close on New Year's Eve, 31st December at 4:00 p.m. and open 2nd January at noon with all services available.

On behalf of the Board and all our associates we hope you are surrounded by family and friends during the Christmas season and wish you all a very happy, healthy and prosperous 2023!



### Staff Casting Call - Still searching for the right people to join our team

If you are looking or know someone who is looking to join a fun, positive and high energy team then we have a job for you! Experience preferred but not necessary as we are willing to train the right people with the right attitude. We are currently on the hunt to fill the following positions:


- \* Front of House all rounder
- \* Sous Chef/Senior Chef de Partie
- \* Kitchen Hand

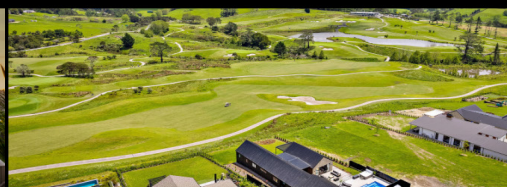
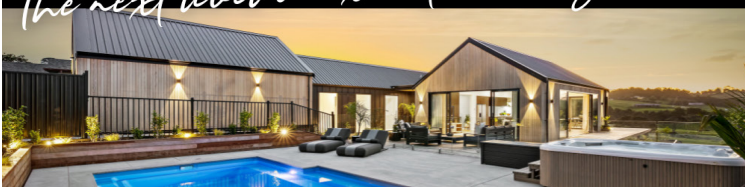


The skills and qualities we consider necessary to be successful:

- \* Positive Enthusiastic Attitude
- \* Proven Reliability
- \* Customer Focused
- \* Great Communicator
- \* Willingness to work nights and weekends

*The next level in executive living!*

 **Gareth Hookham**



**NEW LISTING! 65 GRAYSON RD, WAINUI**

PH: 021 345 474 | [gareth.hookham@harcourts.co.nz](mailto:gareth.hookham@harcourts.co.nz)

- 4 Bed, 2.5 Bath | Designer open plan kitchen & living area
- Approx 280sqm floor area | Swimming pool & large entertaining area
- Overlooking the 3rd hole at Wainui Golf Course | Over 1500sqm section

**Harcourts** Cooper & Co  
Cooper & Co Real Estate Licensed Under REAA2008